



創意薈 The Create by HSUHK

15/F, M+ Building,
West Kowloon
Cultural District, 38
Museum Drive,
Kowloon

西九龍博物館道38號
M+ 大樓15樓

Service Hotline :
3963 5110

西九文化區

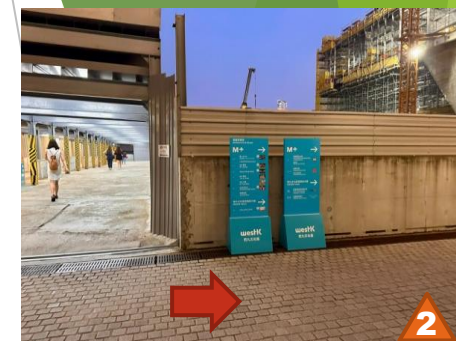
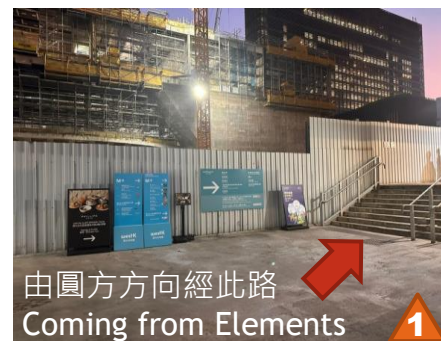
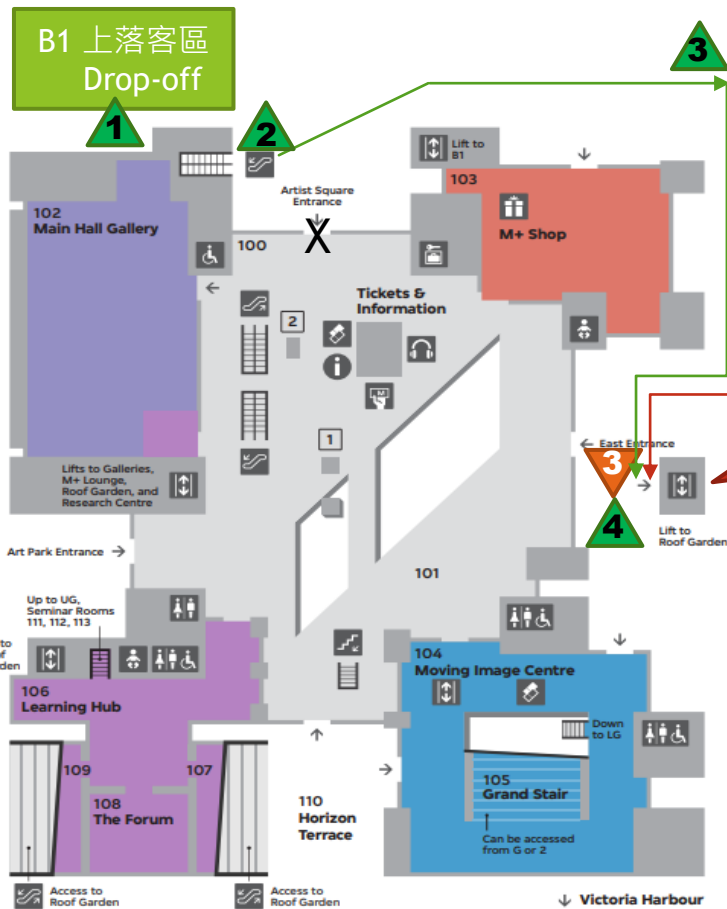
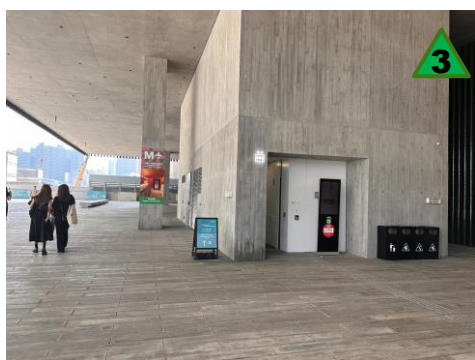


日期 Days of Week	開放時間 Opening Hours
星期一至六 Monday to Saturday	上午十時至晚上十時 10:00 – 22:00
星期日及公眾假期 Sunday and Public Holiday	關閉 Closed

前往創意薈 Travel to The Create

****請勿進入博物館**
Please do not enter
the Museum

圓方Elements



只有9號及10號升降機能到達15樓
Only passenger lifts No. 9 and 10 can reach 15/F



港鐵 By MTR

- ▶ 九龍站 - **C1**或**D1**出口：跟從路標指示前往**ELEMENTS**圓方金區**2**樓的藝術廣場天橋出口，經藝術廣場天橋即可抵達西九文化區與**M+**，路程需時約十至十五分鐘
- ▶ 九龍站 - **E4**或**E5**出口：沿雅翔道步行至博物館道，抵達西九文化區。路程需時約十至十五分鐘

Kowloon Station

- Exit C1 or D1: Take the escalator to 1/F and follow the signs through ELEMENTS to the Artist Square Bridge on 2/F, Metal Zone to reach WestK. The walk is approximately ten to fifteen minutes.
- Exit E4 or E5: Walk along Nga Cheung Road to Museum Drive. The walk is approximately ten to fifteen minutes.

- ▶ 柯士甸站 - **D2**出口乘坐巴士或小巴前往西九文化區：(每日)專線小巴**CX1**/(週末及公眾假期)**W4**
- ▶ 柯士甸站 - **B4**或**B5**出口經圓方前往西九文化區，路程需時約十至十五分鐘

Austin Station

- Exit D2: Take bus or minibus to WestK
(Daily) : CX1
(Weekends and Public Holidays) : W4
- Exit B4 or B5: Walk to WestK via ELEMENTS. The walk is approximately ten to fifteen minutes.

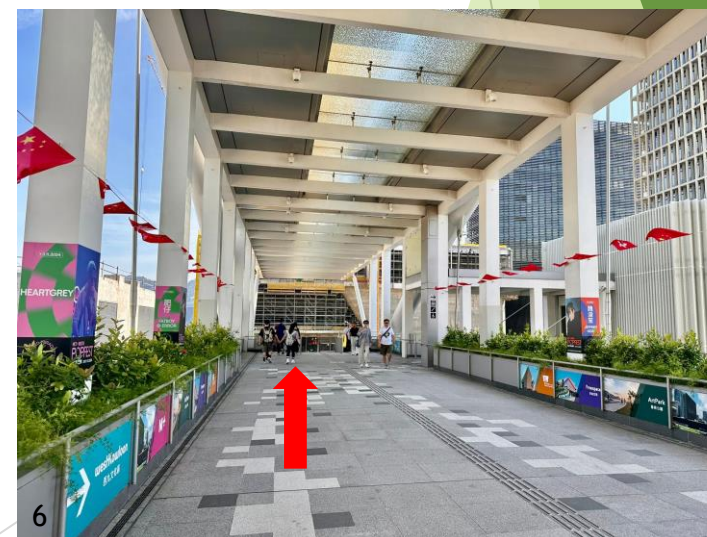
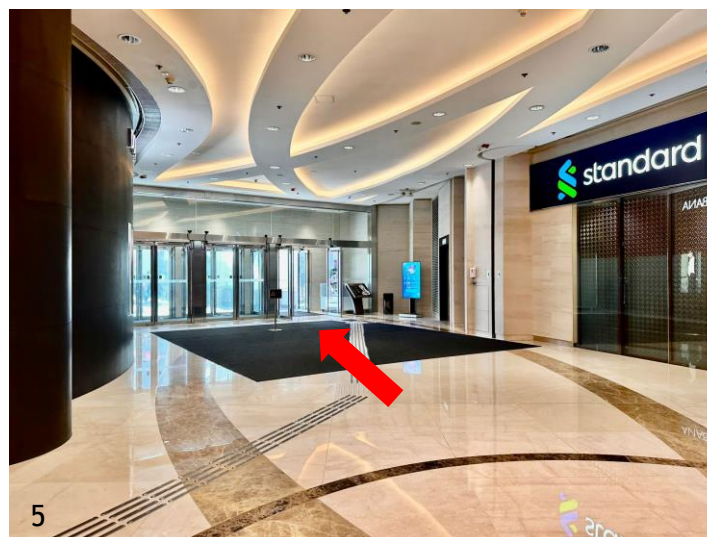
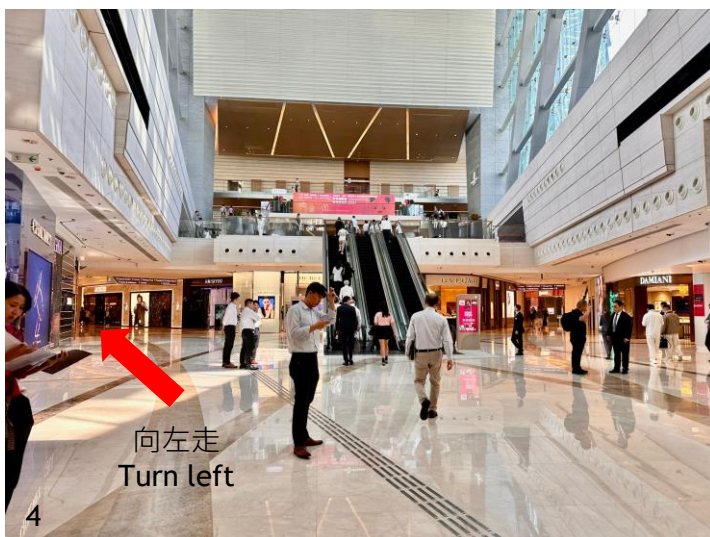
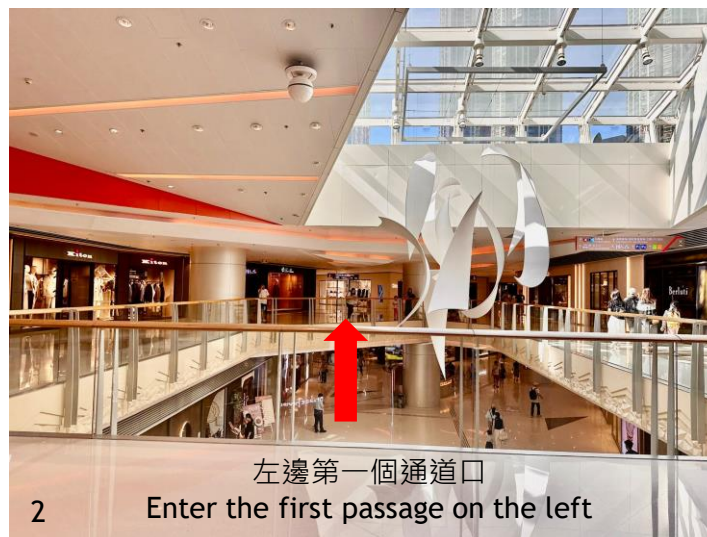
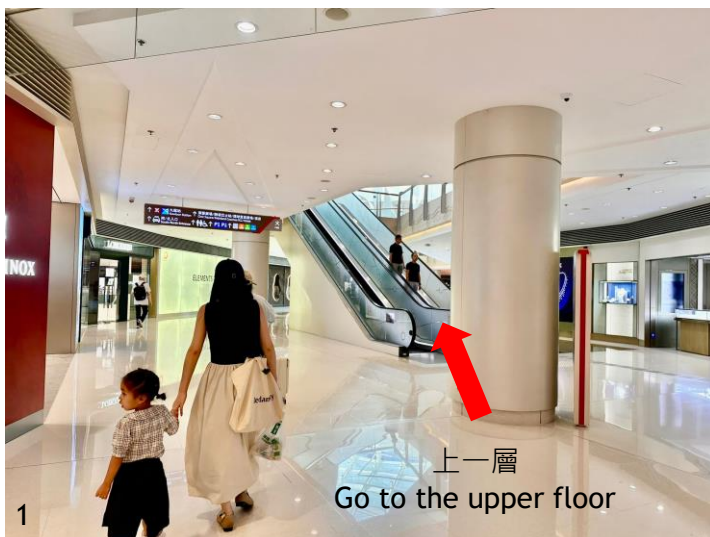
港鐵 / 高鐵 By MTR / High Speed Rail

由柯士甸站B4或B5或九龍站C1或D1出口，經ELEMENTS 到 M+方向指示

From Austin Station B4 or B5 or Kowloon Station Exit C1 or D1 via ELEMENTS to M+



向環球貿易廣場 / 天際100 方向
Towards ICC / SKY100



駕車 By Car

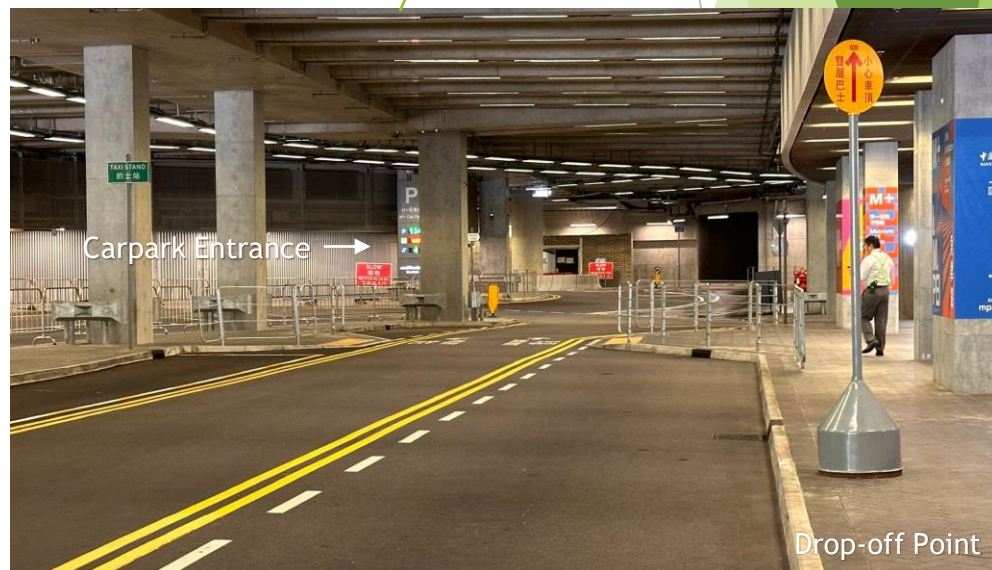
- ▶ 西九文化區亦設有時租停車場。

Parking is available at WestK.

你由雅翔道和柯士甸道的迴旋處進入博物館道，一直駛至第一個交通燈的交匯處並左轉，在M+ B1層的入口處有指定的上落客區。沿扶手電梯上一層，便可到達G/F。

You can head to the roundabout at Nga Cheung Road and Austin Road West and head to Museum Drive. At the first intersection on Museum Drive, on your left is a designated pick-up and drop-off area on B1 Floor. Please go up to G/F via the escalator.

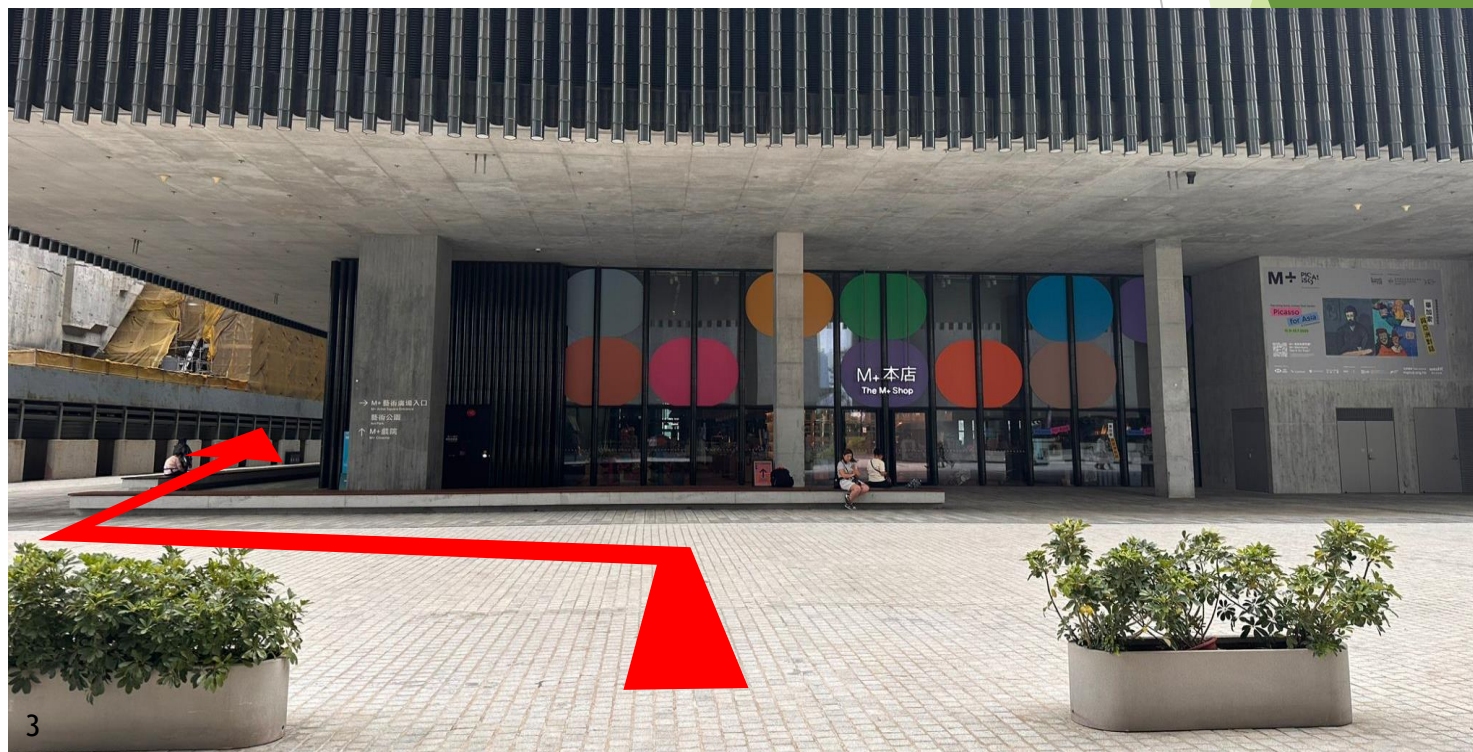
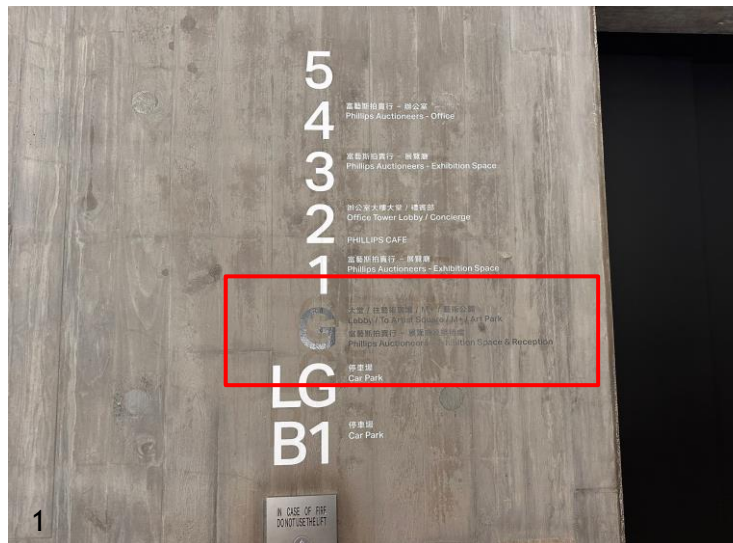
Hourly Parking	Rate (in HK\$)
Monday to Friday (Except Public Holidays)	\$28 per hour
Saturday, Sunday and Public Holidays	\$32 per hour



駕車 By Car

- 如你駕車停泊於西九文化區的時租停車場後，請乘升降機至G/F，走出該升降機大堂，便可沿博物館外圍找到9號或10升降機，到達15樓。

If you park your car at the hourly car park in the WestK, please take the elevator to G/F. Walk out of the elevator lobby and you can find elevator no. 9 or 10 along the perimeter of the museum and reach 15/F.



巴士及小巴 By Bus or Minibus

► 博物館道:

(每日):專線小巴26、74或74S/

(週末及公眾假期): 296D/

(星期五、週末及公眾假期):專線小巴26D、74D或77M

Museum Drive:

(Daily) : Minibus 26, 74, or 74S

(Weekends and Public Holidays): 296D

(Friday, weekends and Public Holidays): Minibus 26D, 74D, or 77M

► 文化道: (每日)專線小巴CX1/(週末及公眾假期)W4

Cultural Drive: (Daily) : Minibus CX1

(Weekends and Public Holidays): W4

► 柯士甸道西 : 215X、261B、281A或215P

Austin Road West:215P, 215X, 261B, or 281A

► 雅翔道 : 8、11、280X或203E

Nga Cheung Road:8, 11, 280X, or 203E

► 西區海底隧道巴士站 : 904、905、914、930、934、936、948、960、961、962B、962X、967、968、969、970、971、973或978

Western Harbour Crossing:904, 905, 914, 930, 934, 936, 948, 960, 961, 962B, 962X, 967, 968, 969, 970, 971, 973, or 978

的士 By Taxi

- 可向的士司機展示博物館地址：M+（香港九龍博物館道38號西九文化區）。

By Taxi / CarYou can show your taxi driver the address in Traditional Chinese: M+ (香港九龍西九文化區博物館道38號)

- 可由雅翔道和柯士甸道的迴旋處進入博物館道，一直駛至第一個交通燈的交匯處並左轉，在M+ B1層的入口處有指定的上落客區。請沿扶手梯上一層到達G/F，沿著博物館外圍，尋找9號或10號客運升降機到達15樓。

If your driver requires assistance, ask your driver to head to the roundabout at Nga Cheung Road and Austin Road West and head to Museum Drive. At the first intersection on Museum Drive, on your left is a designated pick-up and drop-off area. This will also take you to the B1 entrance of the Museum. Please go up to G/F and find elevator no. 9 or 10 along the perimeter of the museum and reach 15/F.



Drop-off Point