



數學、統計及保險學系  
DEPARTMENT OF MATHEMATICS,  
STATISTICS AND INSURANCE

香港恒生大學  
THE HANG SENG UNIVERSITY  
OF HONG KONG



# Bachelor of Science (Honours) in **ACTUARIAL STUDIES AND INSURANCE** (BSC-AIN)

## 精算及保險(榮譽)理學士



# Unique Programme Features

## 課程特色

### Nurturing Talents to Meet Demand in Rapidly Changing Market 培養人才以切合市場需要

Bachelor of Science (Honours) in Actuarial Studies and Insurance Programme integrates actuarial knowledge with business and insurance education. Aiming to nurture future leaders in the fast-changing business world, our Programme equips students with the essential actuarial skills including data analytics, investment and financial analysis. Our highly competitive graduates provide expert recommendations in a vast array of disciplines such as risk management, insurance and consulting.

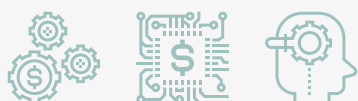
精算及保險（榮譽）理學士課程融合精算知識與商業和保險教育。課程教授學生精算方面重要的技術，包括數據分析、投資、財務等，以協助學生在瞬息萬變的商業世界中應對各種挑戰，展現領袖才能。課程畢業生能在風險管理、保險和諮詢等不同業務領域作出專業的建議和決策，在市場上保持卓越的競爭力。



#### Actuarial Studies 精算

Equipping students with knowledge and skills in probability and statistics, data analytics, financial mathematics, investment and risk analytics, and developing their ability in analyzing combinations of insurance and asset products, and controlling the operational risk of companies.

教授學生概率統計、數據分析、金融數學、投資及風險分析等領域的知識和技巧，培育學生設計及分析保險及資產類產品組合、管控企業運營風險的能力。



#### Insurance 保險

Providing essential and important business knowledge, such as business administration, marketing and financial accounting, to prepare students to take up professional roles in investment, banking, risk management, consulting, and insurance industries.

教授學生工商管理、市場營銷、財務會計等實用與重要的商業知識，為學生在投資、銀行、風險管理、諮詢和保險行業擔當專業崗位做好準備。



# Study Subsidy Scheme for Designated Professions/Sectors (SSSDP)

## 指定專業/界別課程資助計劃

To meet the increasing demand of professional talents in the market, our Programme has been selected under SSSDP. Students of our Programme, admitted via JUPAS, will be granted an annual tuition fee subsidy up to HK\$44,950, tenable for the normal duration of the programme.

為滿足市場對專業人才日益增長的需求，本課程獲納入教育局的指定專業/界別課程資助計劃。經JUPAS申請入讀本課程的學生，在課程的正常修業期內，每年可獲最高44,950港元學費資助。



1 Mentorship Programme  
師友計劃

2 Student Exchange Programme  
學生交流計劃

3 Consultation Day  
恒大課程諮詢日

4 BSC-AIN students  
passed the Actuarial  
Society of Hong Kong  
(ASHK) examinations.  
BSC-AIN學生通過  
香港精算學會考試

5 Peer & Personal Tutor Programmes  
朋輩及導師指導計劃

6 Joint-School Competition  
聯校比賽

7 'The New Code of Conduct  
for the Insurance Industry'  
Seminar  
「保險業新專業守則」講座

## Programme Structure 課程結構

BSC-AIN Programme consists of 43 modules (126 credits), including the following compulsory courses:

精算及保險 (榮譽) 理學士學位課程包含43個單元科目 (126 個學分) , 其中包括以下必修科目 :

### Common Core Curriculum 共同核心課程

#### Year 1-3 (第一年至第三年)

- Freshman Chinese  
大一國文
- Chinese Literature Appreciation  
中國文學欣賞
- Applied Putonghua  
應用普通話
- University English (I)  
大學英語 (一)
- University English (II)  
大學英語 (二)
- English for Academic Purposes  
學術英語
- English for Professional Communication  
專業英語傳意
- Intro to Linear Algebra and Calculus  
線性代數及微積分概論
- Contemporary Information Technologies  
當代資訊科技
- Perspectives on GE  
通識概論

### Business Education 商學教育

#### Year 1-2 (第一年至第二年)

- Business Economics 1  
商業經濟學 (一)
- Business Economics 2  
商業經濟學 (二)
- Principles of Management  
管理學原理
- Financial Accounting  
財務會計
- Hong Kong Business Law  
香港商務法
- Principles of Marketing  
市場學原理
- Financial Management  
財務管理
- Corporate Finance  
公司財務學

### Actuarial Studies and Insurance 精算及保險

#### Year 1-2 (第一年至第二年)

- Foundations of Data Science  
概率論及數理統計
- Probability and Statistical Theory  
概率及統計理論
- Math for Actuarial Studies & Insurance  
精算及保險應用數學
- Intl Insurance Principles & Mkts  
國際保險原理及市場

#### Year 3-4 (第三年至第四年)

- Life Contingencies I  
壽險精算 (一)
- Computing for Statistical Analysis  
電腦統計分析
- Software Applications for Insurance  
軟件實務及保險應用
- Financial Mathematics  
金融數學
- Statistical Inference  
推斷統計學
- Investment and Risk Analysis  
投資及風險分析
- Life and Health Insurance  
人壽及醫療保險
- Property and Liability Insurance  
財產及意外保險
- Derivatives Valuation  
衍生工具模型及估值
- Predictive Analytics I  
預測分析 I
- Predictive Analytics II  
預測分析 II



## Entrance Requirements 入學要求

**Q : What are the general Entrance requirements for the Programme?**

問：課程有何一般入學要求？



**A :** For local applicants with past and / or current HKDSE Examination results, the general entrance requirements are Level 3 or above for Chinese Language, English Language, Mathematics (Compulsory Part), and Level 2 or above for Liberal Studies and one elective subject.

答：對於持有往屆及/或應屆香港中學文憑考試成績的本地申請人，一般入學要求為中國語文、英國語文、數學(必修部分)取得第3級或以上成績，通識教育及另一選修科取得第2級或以上成績。

**Q : Which HKDSE subjects have heavier weights for Programme admission?**

問：哪些香港中學文憑考試的科目在收生時會佔較大比重？

**A :** The results of English, Mathematics (Compulsory Part), Mathematics Extended Part Module 1 or 2 (M1/M2), Business, Accounting and Financial Studies (BAFS) and Physics have heavier weights.

答：英文、數學(必修部分)、數學延伸部分單元一或二(M1/M2)、企業、會計與財務概論、經濟和物理的成績在收生時會佔較大比重。



## Professional Recognition 專業認可

- Chartered Insurance Institute  
英國特許保險學會
- Society of Actuaries  
北美精算學會
- The Australian and New Zealand  
Institute of Insurance and Finance  
澳大利亞及新西蘭保險與金融學會



## Internship Opportunities 實習機會

The Hang Seng University of Hong Kong collaborates with more than 300 companies or organisations worldwide which have provided over 1,100 internship places to our students in 2021/2022. 在 2021/2022 學年，香港恒生大學與業界共逾 300 間機構，為本校學生提供超過 1,100 個實習機會。



Participating organisations include 參與機構包括:

- |  |                                 |   |
|--|---------------------------------|---|
| • AIA<br>友邦                              | • Chubb<br>安達保險                 | • Manulife<br>宏利  |
| • Aon Hong Kong<br>怡安香港                  | • FTLife<br>富通                  | • Prudential<br>英國保誠  |
| • BE Reinsurance<br>永和再保險                | • FWD Group<br>富衛集團             | • Sun Life Hong Kong<br>香港永明金融  |
| • BOC Life<br>中銀人壽                       | • Generali Life<br>忠意人壽         | • The Hongkong and<br>Shanghai Banking<br>Corporation Limited<br>香港上海滙豐銀行 |
| • China Taiping Insurance (HK)<br>中國太平保險 | • Hang Seng Bank<br>恒生銀行        | • Zurich Insurance<br>蘇黎世保險   |
| • Chiyu Banking Corporation<br>集友銀行      | • Insurance Authority<br>保險業監管局 |   |

## Internship Sharing 實習分享

*Being an actuarial intern in FTLife has gained deeper insights into the insurance industry and it has helped me significantly with my career planning. I was assigned to the solvency team, and doing equities movement reports every day. I realized that I should not be afraid to ask questions. If you ask, you will learn more and improve yourself.*

Year 3, CHAN Tsz Ching



*What I have learnt from this internship is how to use Prophet, such as model running and spreadsheet checking to see if there is any error inside. I have also used the skills learnt from school such as Excel formulae, VBA and some actuarial skills in Excel. I think these skills are important to be an actuary. My supervisor gave me a lot of tasks which were quite difficult for me. Although I had spent much time to read and understand, I could handle them eventually. There are three important things to be an intern: be patient, be careful and ask supervisor for help if facing any problem.*

Year 4, TONG Ho Wang Wilton



## Scholarships 獎學金

- AR Charitable Foundation Scholarships  
德和慈善基金獎學金
- CMG Entrance Scholarship in Actuarial Studies and Insurance  
安基國際精算及保險(榮譽)理學士入學獎學金
- CMG Subject Prizes  
安基國際科目獎
- The Hong Kong Federation of Insurers Scholarships  
香港保險業聯會獎學金



## Words from Graduates 畢業生分享



*BSC-AIN not only focuses on actuarial techniques but also gives us a complete understanding of the insurance industry. I learned practical skills that are helpful when working in the industry. A lot of resources are provided to enrich our knowledge and broaden our horizons such as internships, sharings, mentorship programmes, etc., which help me to find an ideal job after graduation. The teachers are all very nice and supportive. They always try their best to give us advice and support. I enjoy studying the BSC-AIN. If you are interested in actuarial science, I strongly recommend you to study this programme.*

*Ms Tai Kai Yan, Renee  
(Actuarial Associate, FuSure Reinsurance Company Limited)*





## ENQUIRIES ON APPLICATION AND ADMISSION 入學申請查詢

Applicants should submit their applications via JUPAS.  
申請者必須經「大學聯合招生辦法」申請。

Tel 電話 : 3963 5231  
Website 網頁 : <https://msi.hsu.edu.hk/en/programmes/ain/>  
Email 電郵 : [ain@hsu.edu.hk](mailto:ain@hsu.edu.hk)  
Address 地址 : Hang Shin Link, Siu Lek Yuen, Shatin, NT  
新界沙田小瀝源行善里

In case of any discrepancy between the English and Chinese versions of the contents of this pamphlet, the English version shall prevail.  
本課程簡介內容以英文版本為準，中文譯本僅供參考。

The Hang Seng University of Hong Kong is incorporated in Hong Kong with limited liability by guarantee.  
香港恒生大學是一間於香港註冊成立之擔保有限公司。

Information updated as of September 2022.  
有關資料更新至2022年9月。

QF Level: 5  
QR Registration No.: 18/000848/L5  
Registration Validity Period: 08/11/2018 to 31/08/2027